

Turn Off Monitor

How about a \$5.00 investment in a software utility that saves you on your electricity bills and saves your computer monitor screens from burnout?

Definitely! But what is this software that can save on power, save possible extra expenditure on a new monitor and cost so little.

Welcome to the world of 'Turn Off Monitor'. This is a utility so simple to implement and use that almost every computer user must have. It can also be installed on laptops and notebooks. In this context the power savings on laptops and notebooks would be the battery time.

Features

Turn Off Monitor is a utility that allows one to : **turn off monitor, lock workstation and turn off monitor, turn off monitor after a specified interval of time, turn off monitor if is in the idle state for a specified time, start default screen saver, shut down computer, restart computer, go into standby, hibernate, log off signed on user.**

Many of the features can be invoked by using System Tray Icon. Actions for the System Tray Icon can be configured by making selections in the Turn Off Monitor settings dialog. The Configurable actions can be to click the right mouse button, the left mouse button, double click the left mouse button or double click the right mouse button.

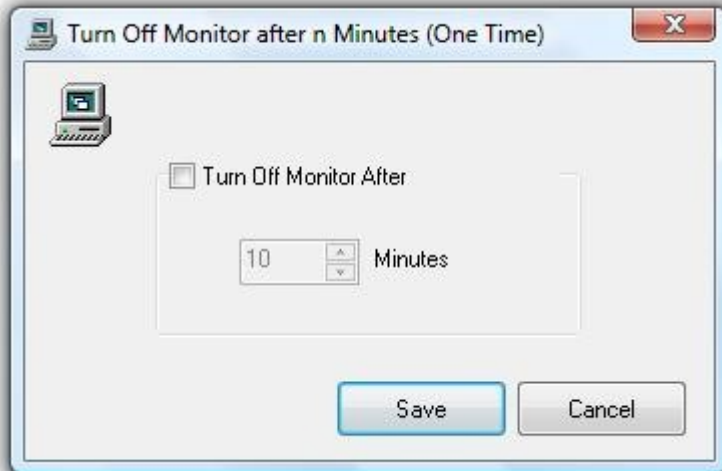
Few of the application features are enumerated below and can be activated from the system tray icon, desktop shortcut, or configurable hot keys .

Turn off a monitor allows one to turn off monitor and avoid power bills or screen burnouts while downloading/listening to music, downloading lengthy files, etc. The Monitor(s) will be turned on at mouse movement or pressing any key on the keyboard.

Lock a workstation and turn off monitor allows one to prevent unauthorised access to the computer as well as implement savings.

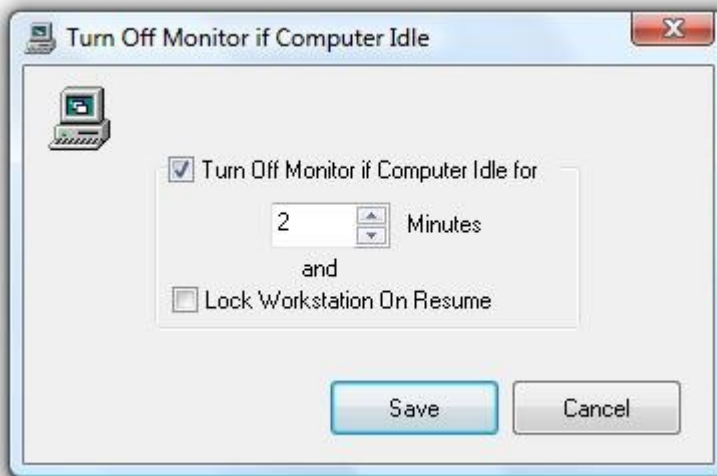
Turn off monitor after a specified interval of time

This can be used as a one time action to Turn Off Monitor after specified interval of time. This functionality works only one time after specified interval.



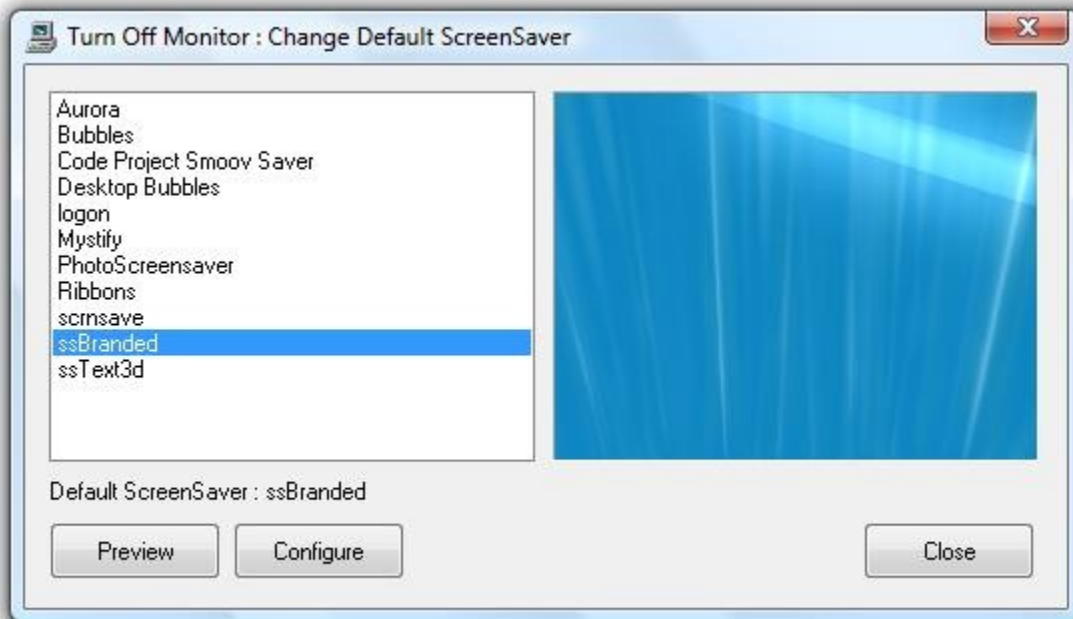
Turn off Monitor in Idle State

This functionality allows to Turn Off Monitor whenever Computer is left in idle state, idle state is a state when there is no user input to the computer in the form of Mouse Movement , Keyboard event, etc . You can optionally opt to Lock Workstation on Resume so that when you are away and someone tries to access your computer, the computer password screen is presented to authorize user the access to the computer.



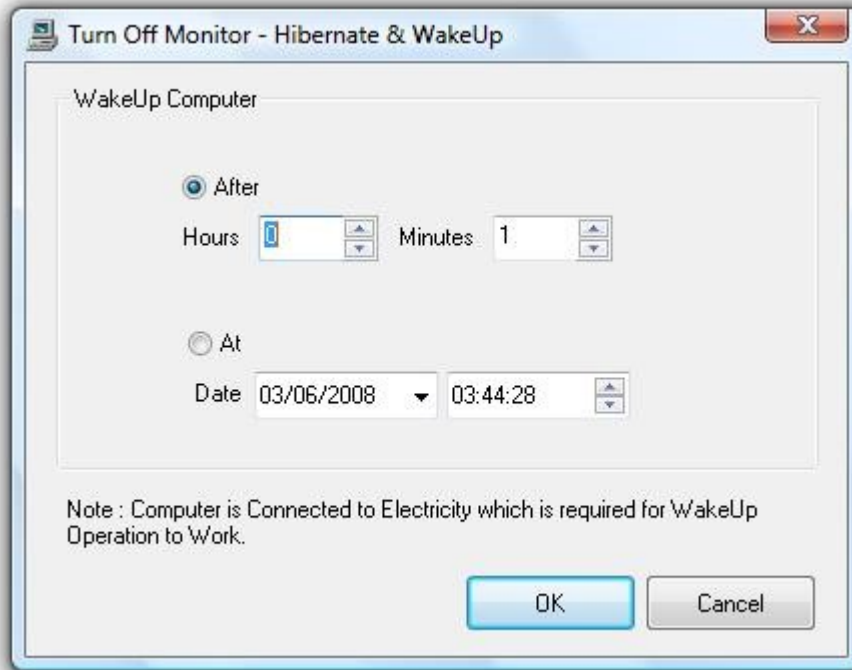
Change Screen Saver

Use the Change Screen Saver functionality to change / view the default screens aver. The functionality allows you to configure or preview the selected screen saver easily and quickly. Just click on the name of the screen saver on the left hand side and that's it, your default screen saver would be changed to the newly selected screen saver.



Hibernate & Wakeup

When going out for a short while do you shutdown or hibernate your computer? Given below functionality of the software can automate the task of sending the computer into hibernation and resuming from the hibernate mode. The requirement of the functionality to work is that your computer should support hibernate mode and should be enabled, also electric power to the computer must remain on so that the operating system can resume after the configurable time duration.



Wow! that's hell of a lot packed into one small utility and this is really tip of an iceberg. There are many other useful features into the utility. Have a look at Turn Off Monitor page at <http://www.rtsoftwares.com/TurnOffMonitor/Turn-Off-Monitor.htm> for features. The utility has been tested on windows XP, Vista and Windows 7 and can be downloaded and tried for free.

Add-ons have now been added to make the utility Turn Off Monitor even more versatile especially within a Multiple Monitor setup. The add-ons are exe files installed during the installation of Turn Off Monitor utility. The add-ons can be placed anywhere on your computer and can be launched easily using double click on them or by creating a shortcut to them etc. Please note that the add-ons will run only with the Turn Off Monitor Utility running with or without system tray icon.

Few of the Turn Off Monitor add-ons are as given below

Cascade is a configuration style that allows windows that are open on a screen to be cascaded or dropped down immediately one below the other with only a view of the topic of each window visible. This helps in knowing what applications are open and the title therein unlike the icons that are placed on the taskbar for each application opened/minimized. If you wish to work on the application click on the top of the window needed. Right clicking on the taskbar and selecting "Undo cascade" reverts to the original.

Disable Secondary monitor allows you to switch off / disable secondary monitor. This

functionality might be useful when you do have a dual display computer setup but you do not want the secondary monitor to work on. The Add

Enable Secondary monitor is an add-on which allows you to enable the secondary monitor in a dual display computer setup. This add on can be used in conjunction with Disable Secondary Monitor add on to control secondary monitor easily in a dual monitor computer setup.

Minimize All is an add-on which minimizes all open windows and docks corresponding icon in the taskbar. This can be useful when you have many open windows and you would like to select a window to work on from the task bar. This add on can also be useful to keep your work away from prying eyes. Please do note that the gadgets running under Winows Vista, Windows 7 will not be minimized.

Multimonitor is another small addon useful when having multiple monitors connected to a computer. The add-on takes control of the mouse and switches its position to a the next monitor at a location where it was last placed. Launch the add-on again to cycle through the connected monitors. You can create a shortcut key to the application / addon to cycle mouse cursor easily across connected monitors.

There is really more in this software utility. This small utility can save you time and money and can help you work with dual displays / monitors effectively and efficiently. Don't wait. Get the utility now! from <http://www.rtsoftwares.com/>